

# Pretrial System Mapping to Improve Local Reforms and Outcomes

DATE: April 17, 2024

PRESENTERS: Dr. Kelvin L. Banks, Associate Director, Center for Effective Public Policy  
Michael Laughlin, Retired Dallas County Pretrial/ Client Executive Tyler  
Technologies

INFO: Texas Association of Pretrial Services Annual Conference

# Faculty

---



**Dr. Kelvin L.  
Banks**  
Associate  
Director,  
CEPP



**Michael Laughlin,**  
Retired Pretrial  
Mgr./Client  
Executive, Tyler  
Technologies

# **APPR** ADVANCING PRETRIAL POLICY & RESEARCH


**Managed by**

**C  P P**

**Center for  
Effective  
Public Policy**

**Supported by**






## Advancing Pretrial Justice

Fair, just, effective pretrial practices, every day,  
nationwide.

### Highlights



Story  
**Addressing Unmet Needs**  
In St. Louis, Missouri, supportive pretrial services address...

[LEARN MORE >](#)



# learn.advancingpretrial.org

Home | APPR Learning

learn.advancingpretrial.org/#/

Gmail YouTube Maps APPR - Google Dri... Grammarly PSA Legacy Sites... PSA Scoring App APPR Virtual Meet... Training/Event Pla... 2021 Learning Sit... CEPP Slides - Goo...

**APPR** LEARNING

ADVANCINGPRETRIAL.ORG APPR COMMUNITY


Prince William County

Overview Deliverables Team Resources Administration Reports

## PROJECT STARTUP

## PRETRIAL ENGAGEMENT

## PRETRIAL FOUNDATIONS

<p><b>Pretrial System Mapping</b></p> <p>Your progress</p> 	<p><b>Pretrial Release and Detention</b></p> <p>Your progress</p> 	<p><b>Pretrial Release Conditions</b></p> <p>Your progress</p> 
--	---	---

## PRETRIAL DECISION MAKING

## PUBLIC SAFETY ASSESSMENT

Report an Issue

# Agenda

---

---

**What Is System Mapping & Why It Is Important**

---

**Process for Mapping Your System**

---

**Examples of System Maps**

# What Is System Mapping & Why It Is Important

---

*Dr. Kelvin L. Banks*

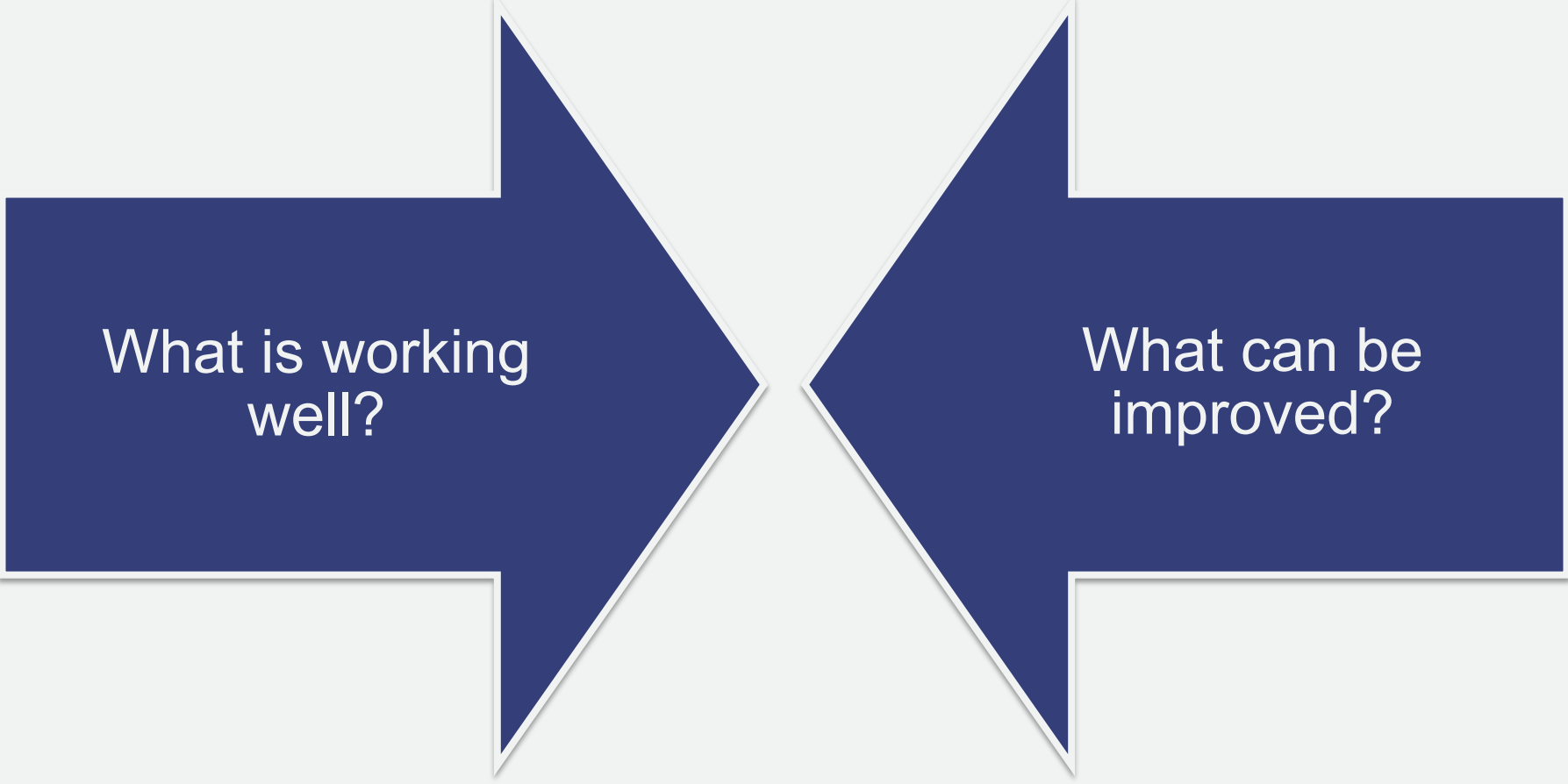
# What is the Purpose of a System Map?

Criminal legal and community stakeholders largely work independently.

As a result, stakeholders often do not fully understand how a person moves through their local criminal legal system.



# What is the Purpose of a System Map?



What is working well?

What can be improved?

# System Map will help understand

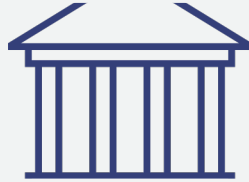
---

1



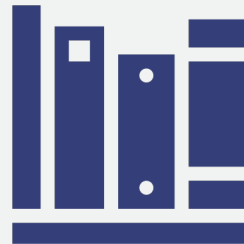
Key Decision  
Points

2



Decision  
Makers

3



Available  
Options

4



Average times  
and  
Volumes/types  
of case

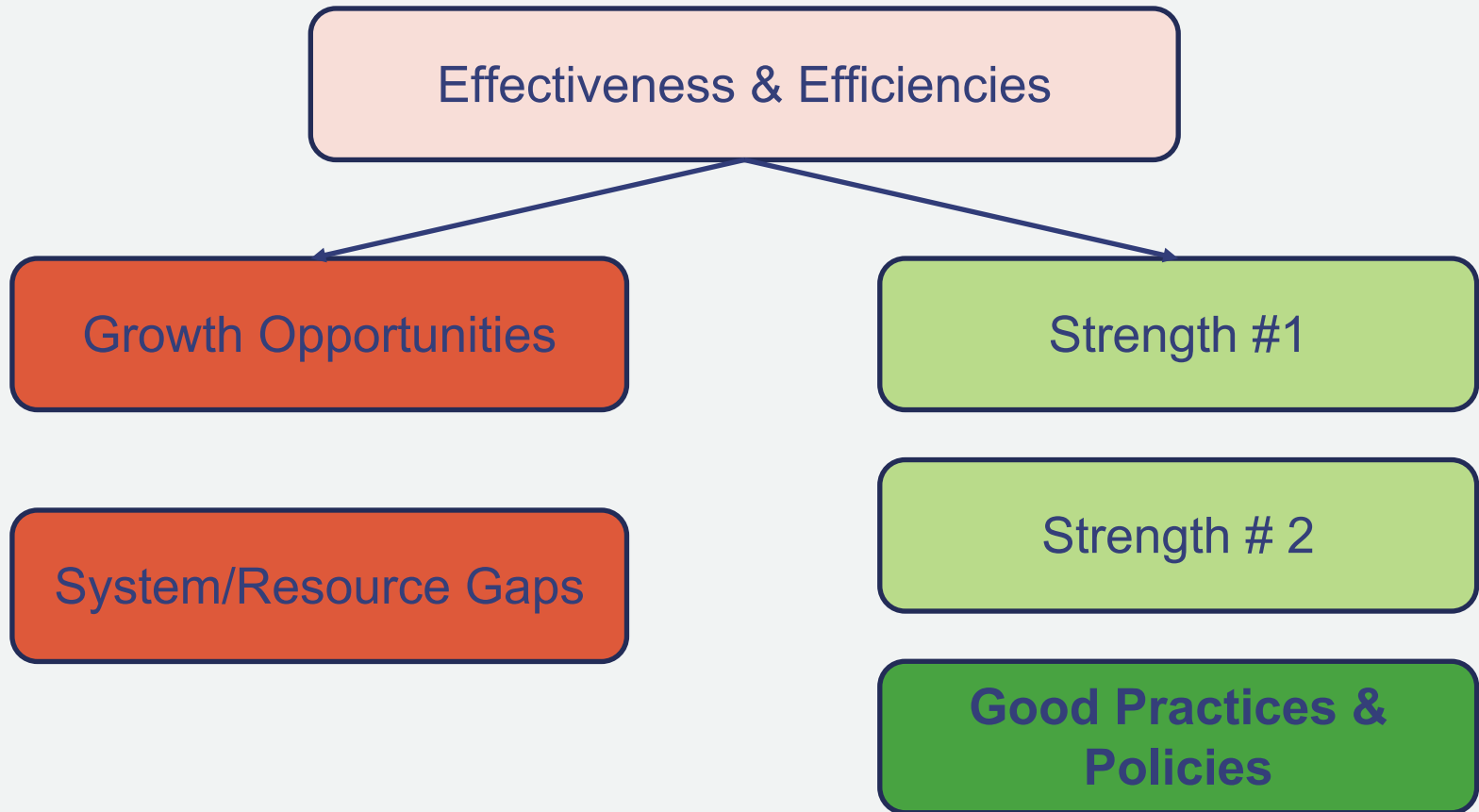
# Increase Shared Understanding

---



# System Map will uncover

---



# Best Practices

---

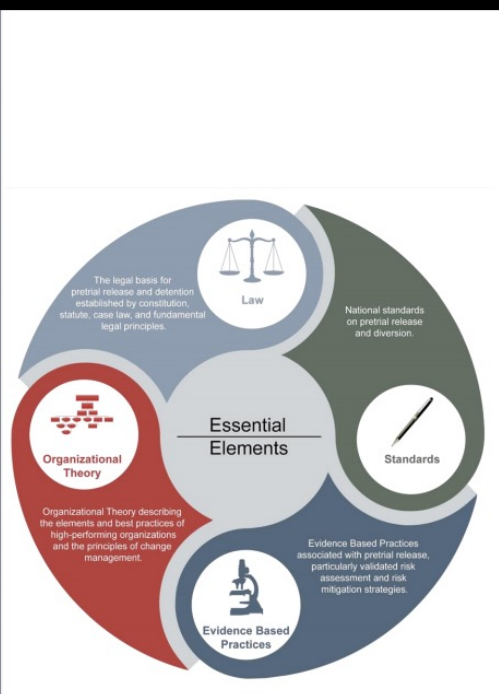
- Policy Roadmap:
  - Process cases swiftly.
- Implementation Roadmap:
  - Continuously educate system and community stakeholders.
  - Increase public understanding of pretrial justice.
  - Evaluate pretrial performance measures regularly and continually improve policies and practices.

## APPR Roadmap for Pretrial Advancement

# Best Practices

## A Framework for Pretrial Justice

### Essential Elements of an Effective Pretrial System and Agency



## SUMMARY OF EBDM PRETRIAL DECISION POINTS

Arrest Decisions	Pretrial Status Decisions	Charging Decision	Plea Decisions
<ul style="list-style-type: none"> <li>•Cite</li> <li>•Divert</li> <li>•Treat</li> <li>•Release</li> </ul>	<ul style="list-style-type: none"> <li>•Release on Own Recognizance</li> <li>•Release with Supervision</li> <li>•Release with Financial Conditions</li> <li>•Detain</li> <li>•Violation Response Response</li> <li>•Supervision Condition Reassessment</li> </ul>	<ul style="list-style-type: none"> <li>•Charge</li> <li>•Divert</li> <li>•Defer</li> <li>•Dismiss</li> </ul>	<ul style="list-style-type: none"> <li>•Plea Terms</li> </ul>

# Process for Mapping Your System

---

*Michael Laughlin*

# Recent Bail Reforms: Legislation, Litigation, Research, and Advocacy

---



**Decarcerate  
and  
Redirect  
Strategies**



Protect Civil and  
Constitutional Rights



Improve  
Community Safety  
and Well Being



Maximize Court  
Appearance and  
Compliance



Promote  
System  
Fairness



Connections to  
resources and  
supports



# Reforms Attempt to Create a System that:

---



**Promotes legal  
and more fair  
processes**



**Reduces unnecessary  
detention of lower risk,  
otherwise releasable  
persons**



**Reduces incarceration due  
to bail unaffordability**

# Importance of Collaborative Processes



- Collaborative Pretrial System mapping
- Increasing safe use of citations/summons, diversion options/programs, pre-first appearance delegated release authority, and legal representation at first appearance
- Regular review of the total “pretrial” jail population to re-evaluate why each person remains in custody
- Conduct meaningful first-appearance court hearings/proceedings



APPR Initiative

# Creating a System Map

---

1)

Describe criminal legal system entry points



2)

Describe how decisions are made



3)

Explore what data are available



4)

Discuss the available options and policies

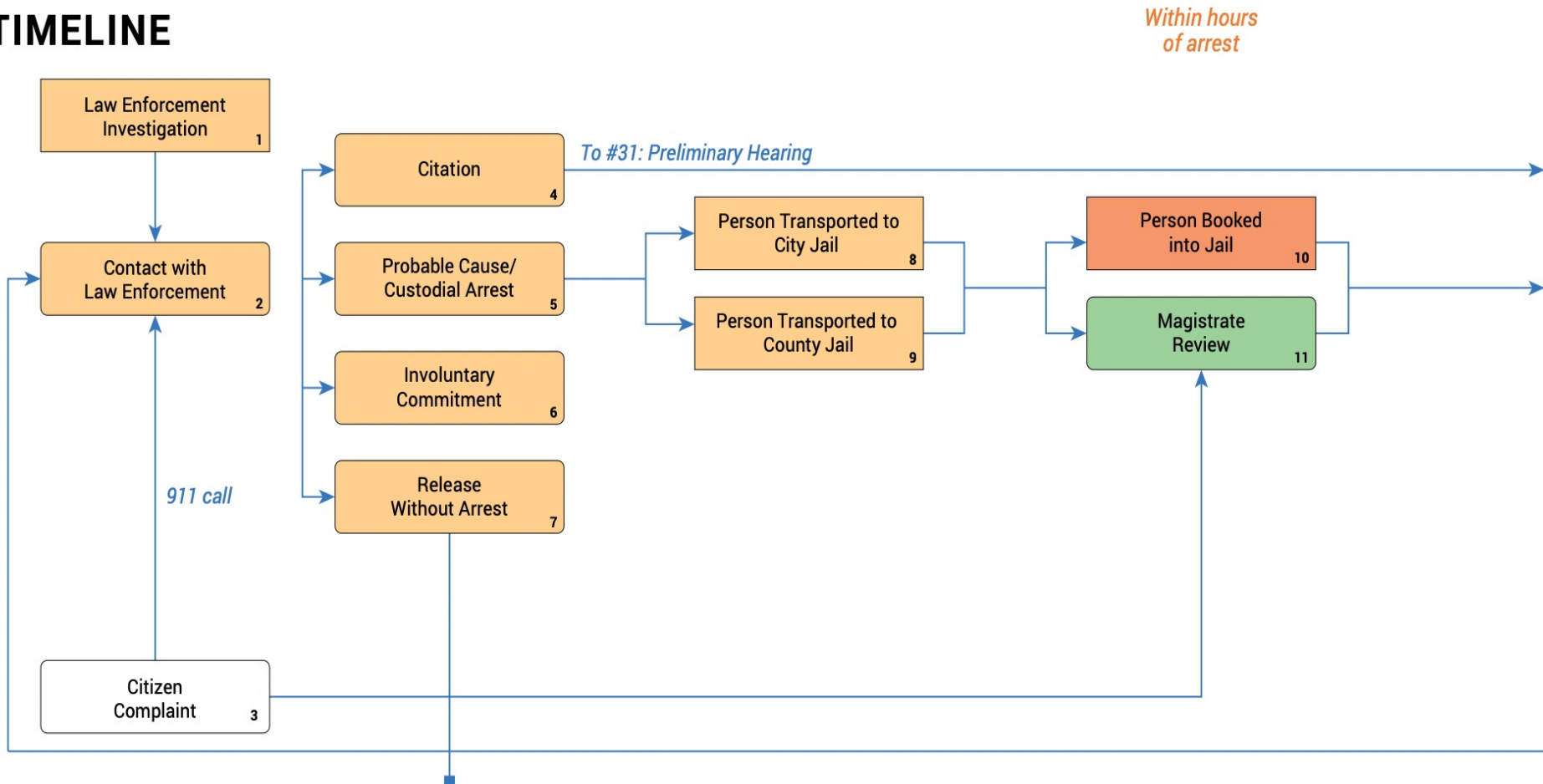


5)

Strengths and Gaps

# System Map (Example)

## TIMELINE



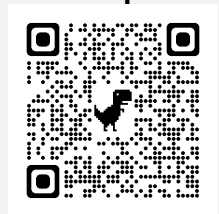
**Legend**

- Key Decision Point
- Law Enforcement
- Jail
- Magistrate
- Prosecution
- Court
- Pretrial

# Key Issues to Consider for Mapping Plans

---

- Local agreement and appetite for system reforms
- Presence/strength of local collaborations, system coordination, support, etc.
- Key leaders available who can influence or champion/drive the effort
- Diverse set of key stakeholders willing to accomplish the goals
- Identification of resources (locations, funds, system support, collateral needs like housing, healthcare, counseling, etc.)
- Important data sources available to assess current state, set baselines, establish goals, measure progress, etc.?
- Available best and/or data-informed practice information/resource to help guide the effort



# Potential Process and Steps for Mapping

---

## Single Policy Team Meeting(s):

- Diverse stakeholder group convenes to identify current vs. preferred future state
- One mapping product stemming from the work session(s)
- More suited for smaller, less complex jurisdictions or narrower targeted mappings.



# Potential Process and Steps for Mapping

---

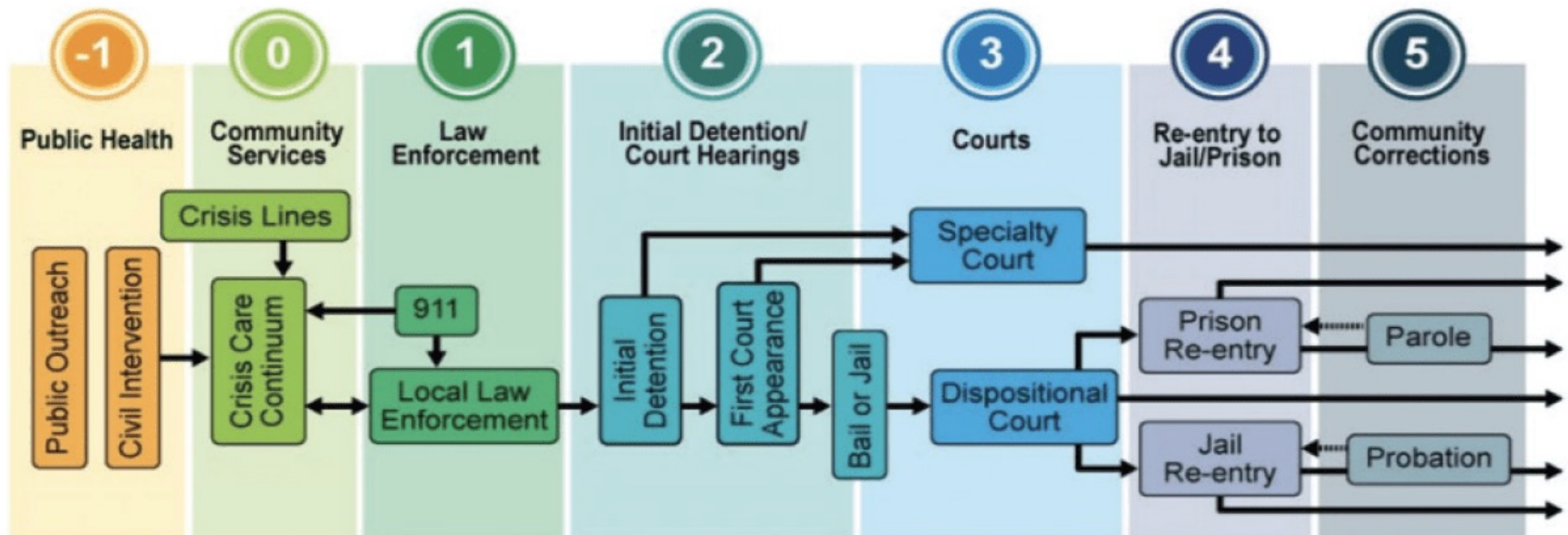
## Workgroup Policy Sessions (or hybrid):

- Begin with convening key decision-makers to agree on and design plan/goals
- Establish and convene working groups comprised of line/supervisor staff
- Identify existing system stages/processes with decision and data points
- Facilitate sessions; mapping decisions, actions, data points of processes
- Identify/collect information needed for each stage to complete steps/stages
- Identify barriers to outcomes, and resources needed to get there
- Continually compare results against group feedback
- Convert flip charts/graphs into electronic version with detailed narrative
- Review and edit final product for Team and Leadership review/approval
- Identify and plan for "next steps"



# Sequential Intercept Mapping for Mental Health Cases (SAMHSA)

Figure 98. Sequential Intercept Model



[SIM Map Model – Policy Research Associates](#)





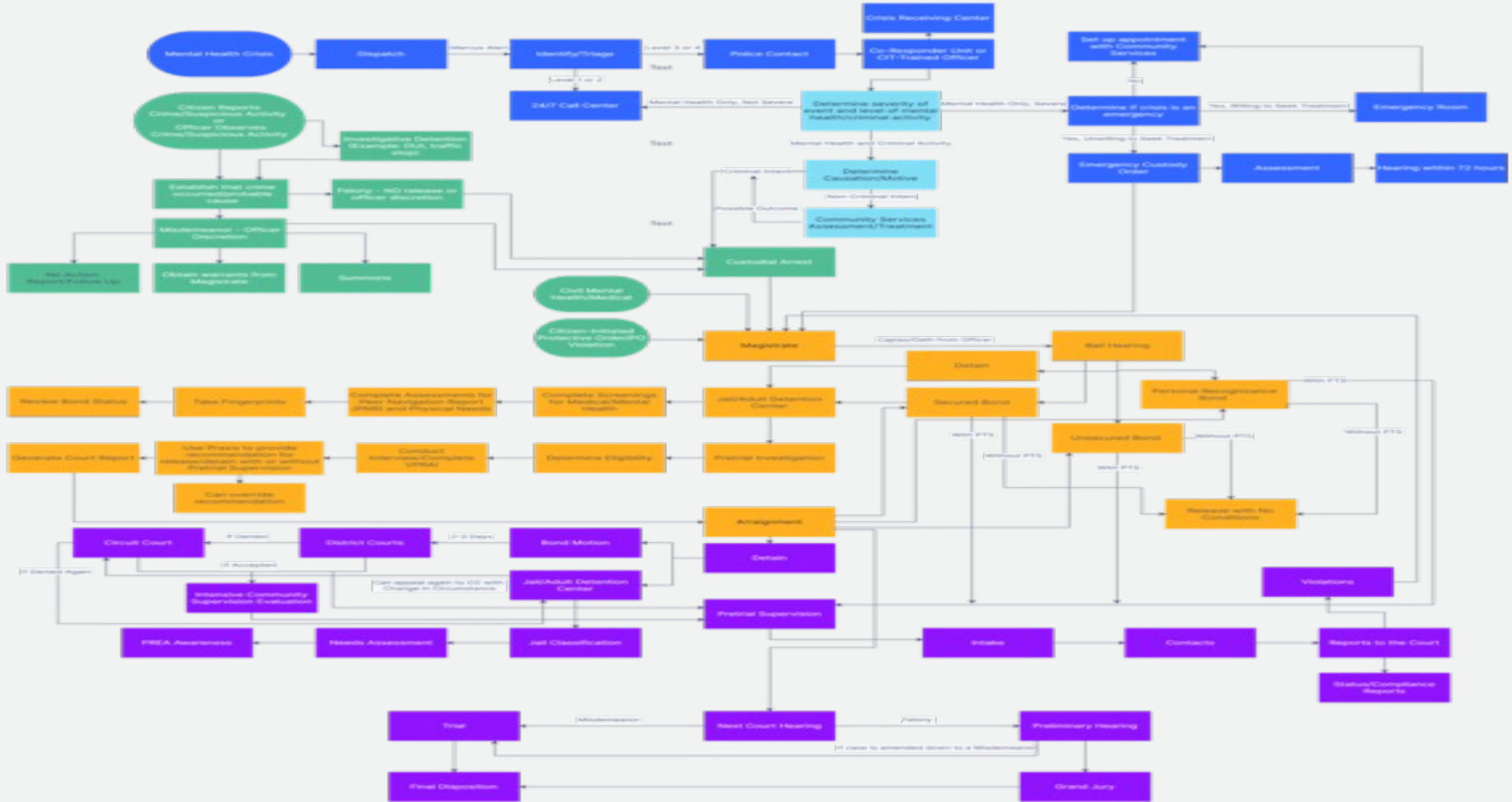
# Examples of System Maps

---

*Dr. Kelvin L. Banks*  
*Michael Laughlin*

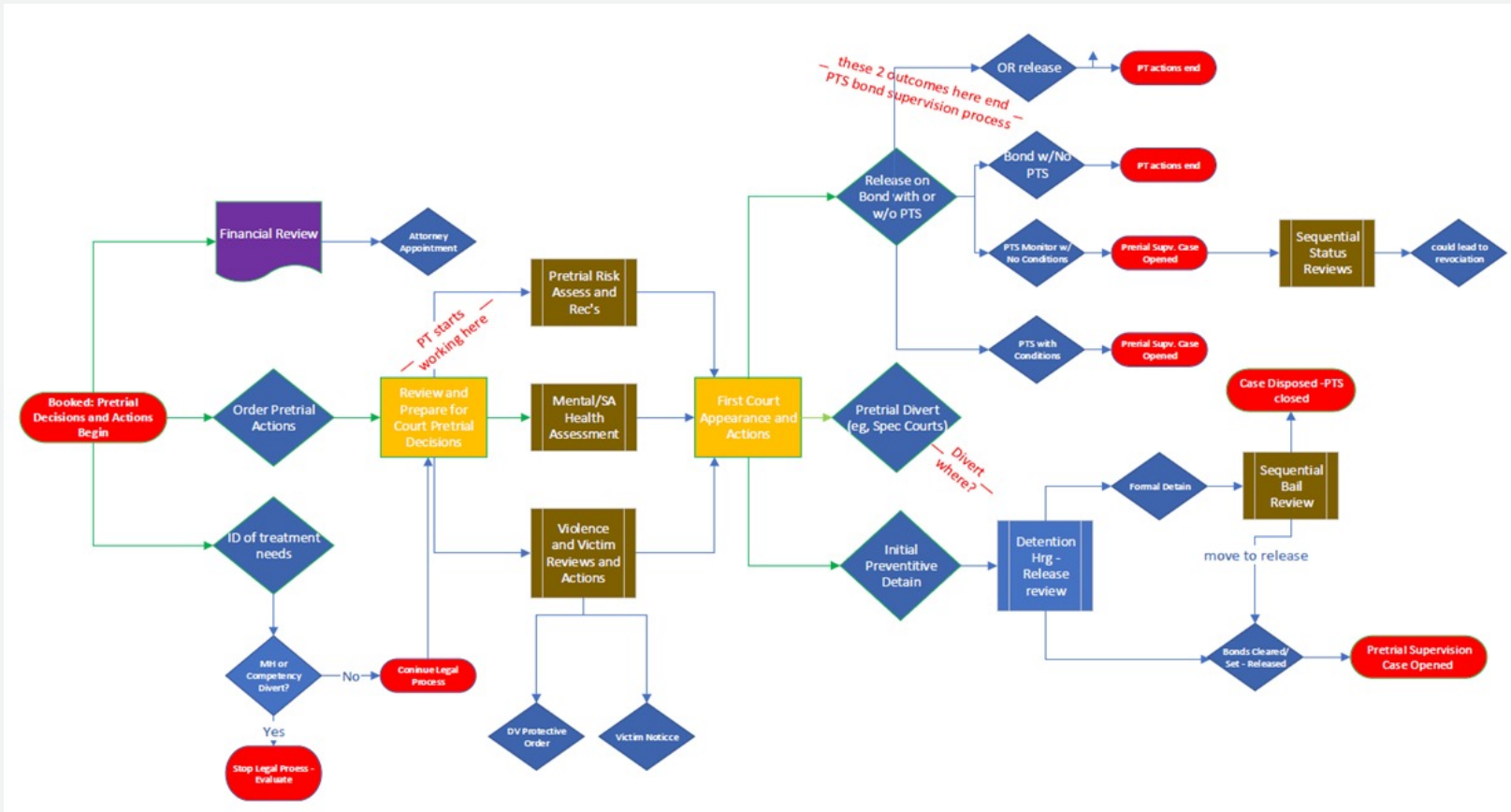
# Prince William County, VA

Dark Blue: Intercept 0  
 Light Blue: Intercept 0.5  
 Green: Intercept 1  
 Orange: Intercept 2  
 Purple: Intercept 3





# Dallas County System Mapping Example



[APPR Site](#)

# Closing Remarks

---

*Dr. Kelvin L. Banks*  
*Michael Laughlin, CPSP/CPDP*



## Key Takeaways...

System Mapping Increases Understanding of How Cases Flow Through Your System



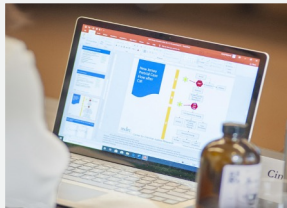
System Mapping Identifies Strengths & Growth Opportunities



System Mapping Should Be Completed/Updated to Inform Pretrial Advancements

# Need Help with Pretrial Advancements?

**Free** Targeted  
Technical Assistance



**Apply Today!**

[https://advancingpretrial.org/  
announcement/targeted-  
assistance-opportunity/](https://advancingpretrial.org/announcement/targeted-assistance-opportunity/)

**Any Questions?**

[ssteed@cepp.com](mailto:ssteed@cepp.com)

**Possible Areas for TTA Support:**

- **Collaboration amongst System and Community Stakeholders**
- **Communications Strategies**
- **Community Engagement**
- **Jail Population Review**
- **Pretrial Legal Analysis**
- **Pretrial System Mapping**
- **Pretrial Support/Services**
- **Public Safety Assessment**
- **And more!**

# Contact Information

---

**Dr. Kelvin L. Banks**

**Associate Director**

**Center for Effective Public Policy**

**Email: [KBanks@cepp.com](mailto:KBanks@cepp.com)**

**Michael Laughlin**

**Retired Dallas County Pretrial Mgr.**

**Client Executive, Tyler Technologies**

**Email: [Mike.Laughlin@tylertech.com](mailto:Mike.Laughlin@tylertech.com)**





# Thank you for your time!

---

Don't forget to register with APPR to receive advance notice of trainings and new resources!

Join the APPR Community to connect with pretrial practitioners from around the country!

